

UPDATER POLINI MANUAL

Firmware update for E-P3+, E-P3+ and E-P3+ EVO motors

INDEX:

1. Connect the motor to the PC
2. Firmware update (motor, display, Bluetooth)
3. Motor Firmware recovery
4. Display Firmware recovery
5. Bluetooth firmware recovery
6. Replace the Comfort E-P3 display with the TFT EVO one (color)
7. How to change the 500Wh E-P3 battery with the 500Wh E-P3+EVO one

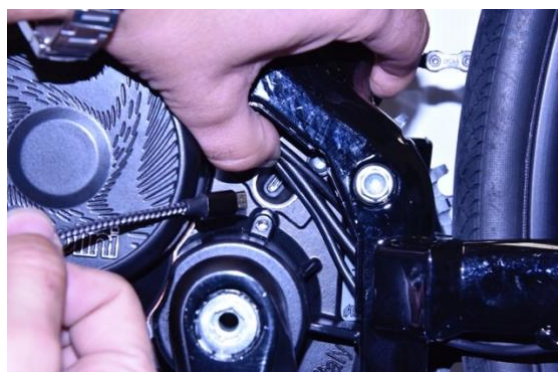
1. CONNECT THE MOTOR TO THE PC



Using a Torx 20 key remove the plastic cover



Remove the aluminum cap using an Allen key CH6



Switch the e-bike battery ON

Connect a micro USB cable to the motor (be careful to the direction when you insert it) and the USB to a PC with Windows 10 version installed (or higher)

For all the operative systems: check that on 1.8 Java or higher is installed: if not download and install Java from: www.java.com

Download the updated version of the [Polini Updater](#) program:

Run the program [Polini Updater](#) with Java.

2. FIRMWARE UPDATE (MOTOR, DISPLAY, BLUETOOTH)

Note: the Polini updater system recognize the motor version and proposes automatically the updates for this model.

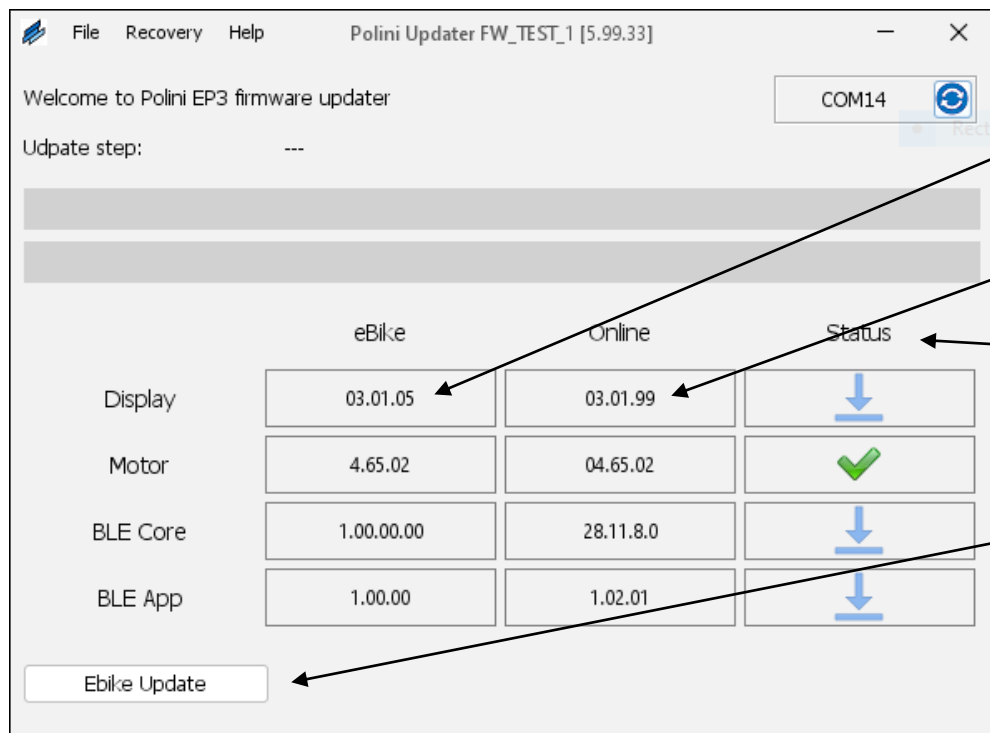
Note: if Java is not installed on the computer, the file could be opened automatically, i.e. with Winzip or Winrar by showing files that cannot be used. Be sure to install Java correctly and that the file has been opened with Java. In case open the file by clicking with the key on the right and select “open with” and “Java”.

ATTENTION: the PC must be connected to internet to execute the updates.

CAUTION: to avoid sudden switching off during the update of the firmware, verify to have enough battery charge or connect the laptop to the charger.

CAUTION: do not disconnect the USB cable during the firmware uploading.

- Switch the bike ON
- Open the “Polini updater” program



1-Firmware version installed on yje e-bike

2- Firmware version available online

3- Update status

4- Press to update the software

- The program shows the version of the firmware installed on the e-bike and those available on-line; to update press the “update ebike” button placed on the bottom left. Once the update has been completed, disconnect the USB cable, switch the bike OFF and then switch it ON. If some alerts messages will appear on the display, cancel them through the diagnostic area on the display menu

3. MOTOR FIRMWARE RECOVERY

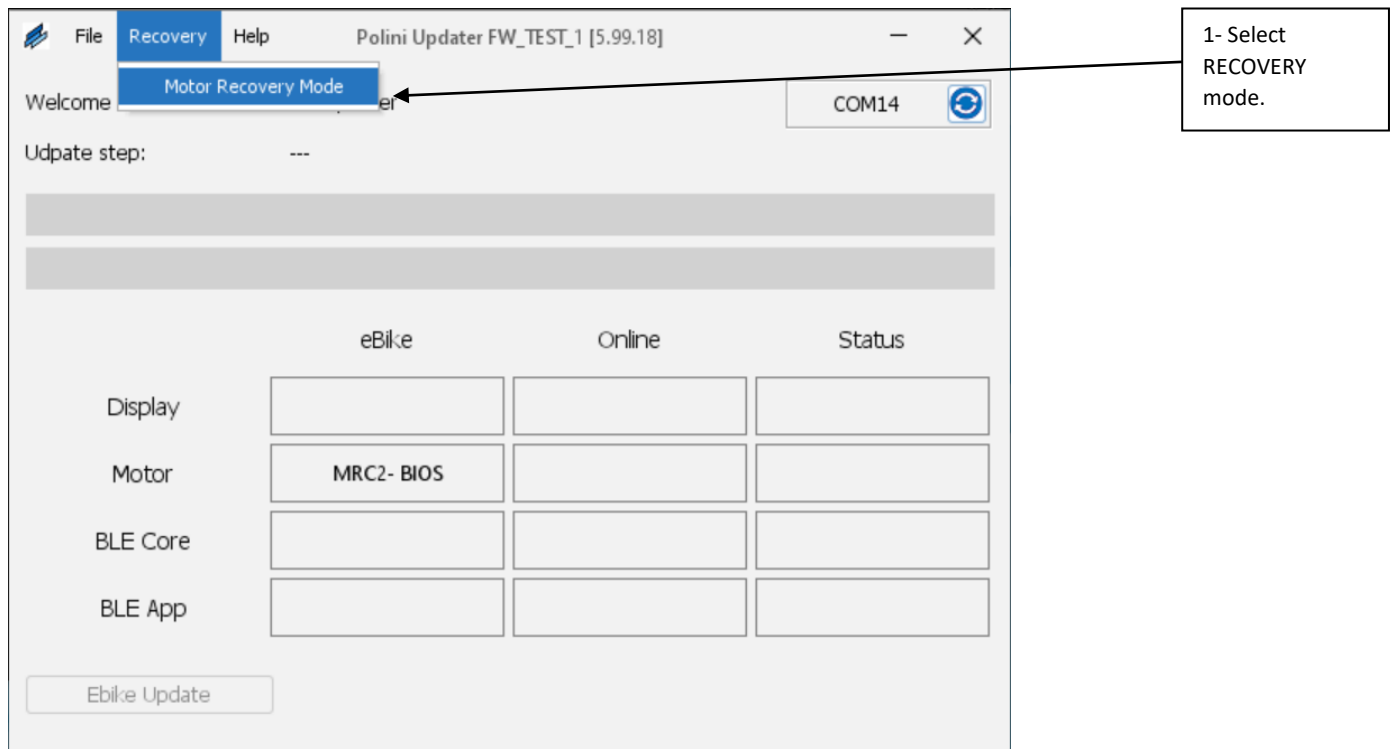
ATTENTION: this procedure must be executed exclusively if the display does not switch ON because of malfunctions or in the case the firmware update has been interrupted before its finishing.

ATTENTION: the PC must be connected to internet to run the updates.

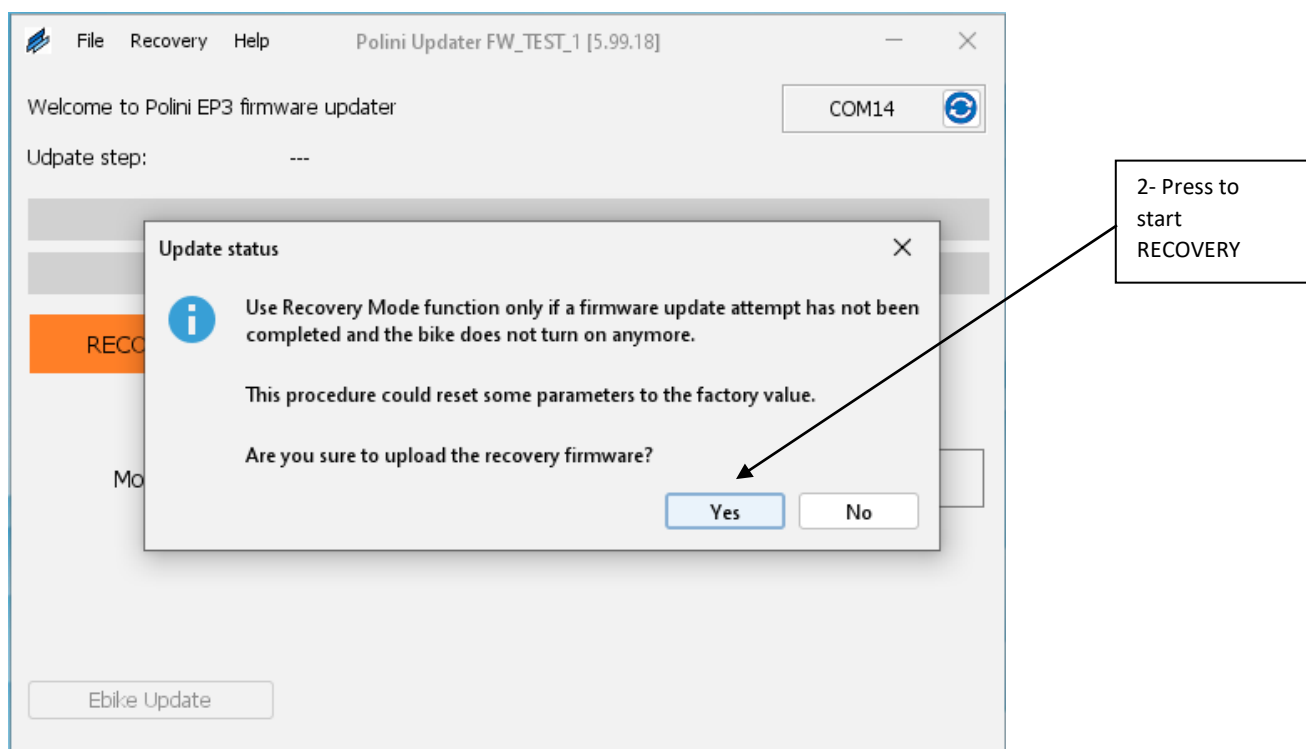
CAUTION: to avoid sudden switching off during the updating of the firmware, verify to have enough battery charge or connect the laptop to the charger.

CAUTION: do not disconnect the USB cable during the firmware uploading.

- Connect the USB cable to the motor and to the PC. Check the battery is OFF.
- Open the “Polini updater” program.



- At the top left of the “Options” menu select “MOTOR RECOVERY MODE”
- Press the key “YES” to confirm



- When the process is completed, disconnect the USB cable and start the bike again.
- If the motor/display do not switch ON, contact the [Polini service](mailto:ebike@polini.com) on the web site at ebike@polini.com

4. RECOVERY FIRMWARE DISPLAY

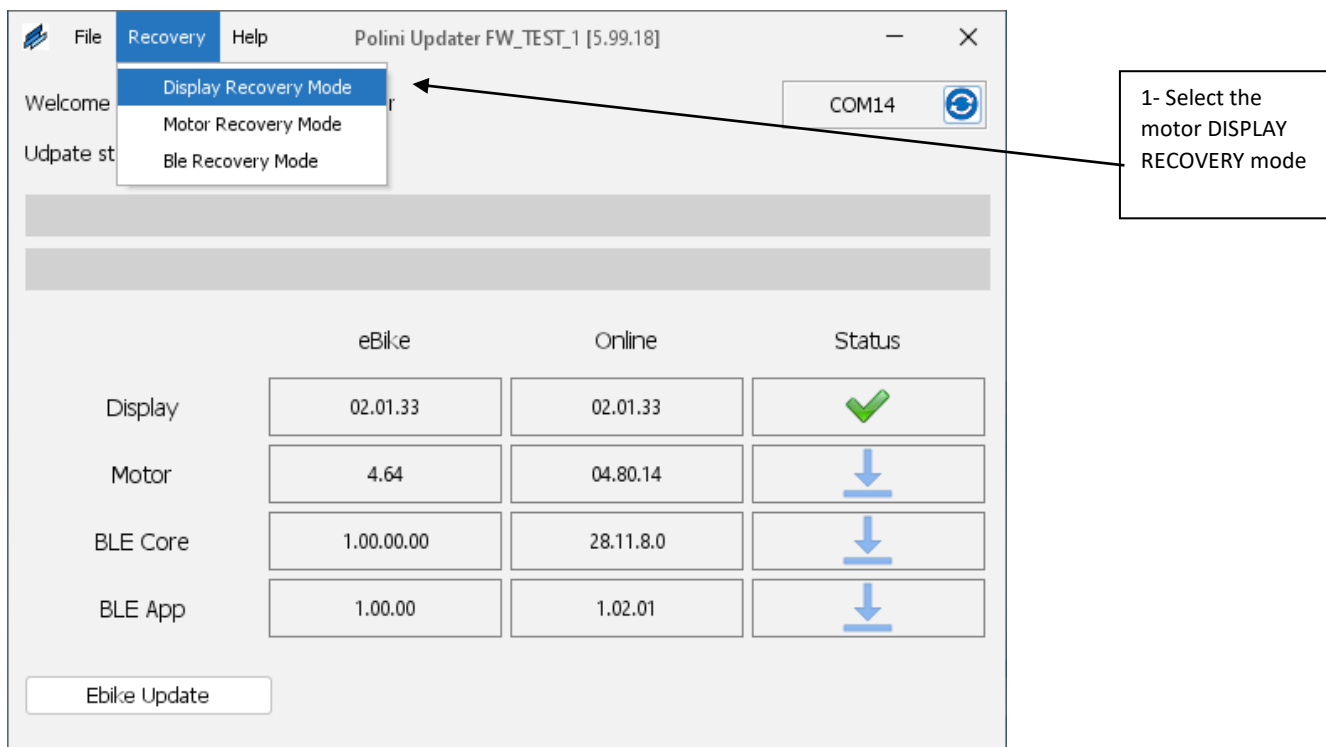
ATTENTION: this procedure must be executed exclusively if the display firmware update has been interrupted before its finishing and, consequently the display does not switch ON

ATTENTION: You need an *internet connection* to *update* your device.

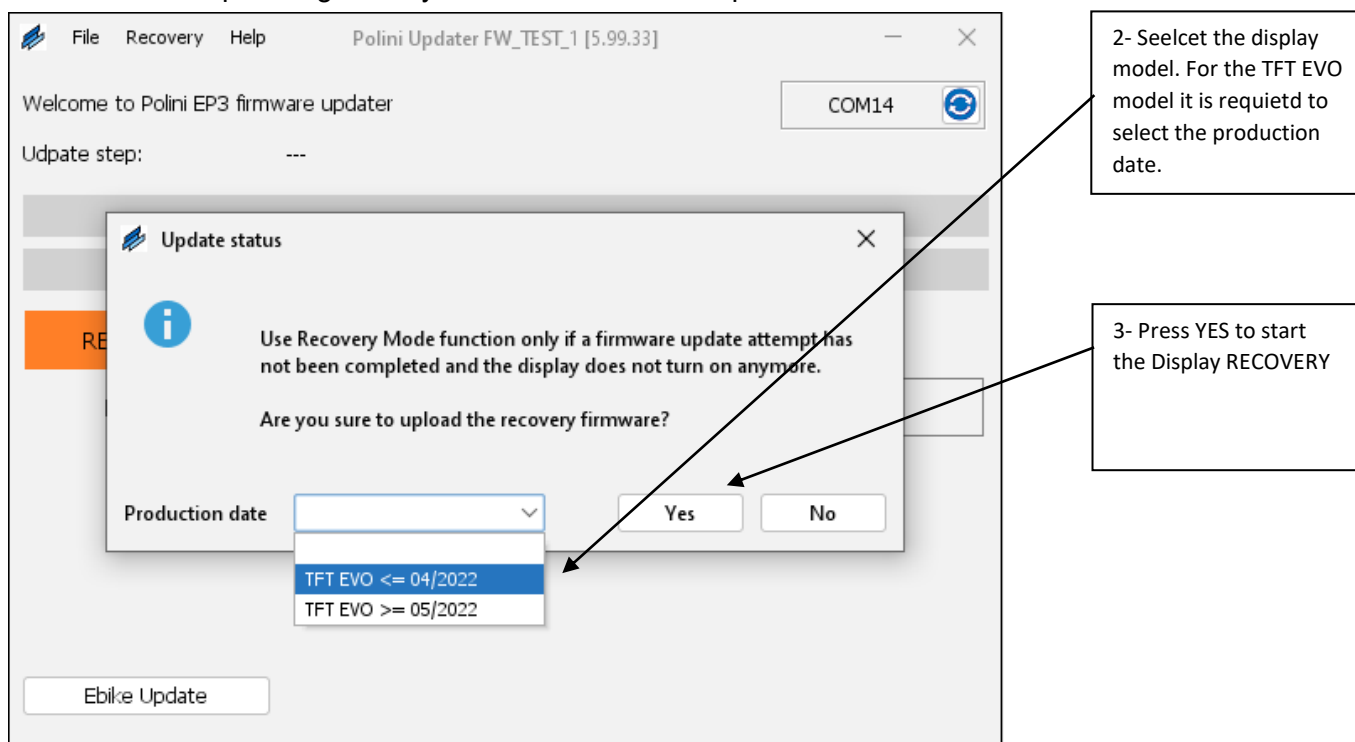
CAUTION: to avoid sudden switches off during the firmware update, if you use check the battery charge status or connect the lap top to the charger.

CAUTION: do not disconnect the USB cable during the firmware upload.

- The Display firmware Recovery must be done when the ebike is ON
- Connect the cable to the engine and to the PC. Open the "[Polini Updater](#)" program



- On the top left of the "RECOVERY" menu select "DISPLAY RECOVERY" mode.
- For the TFT EVO display select the production date indicated in the serial number printed in the back. (I.e. serial no. 202102= 02/2021)
- Confirm it pressing the key "YES" and wait till the procedure is over.



- When the procedure is over, disconnect the USB cable and switch the bike ON.
- If the motor/display does not start, contact the [Polini service](mailto:ebike@polini.com) on the web site or at ebike@polini.com

5. RECOVERY FIRMWARE BLUETOOTH

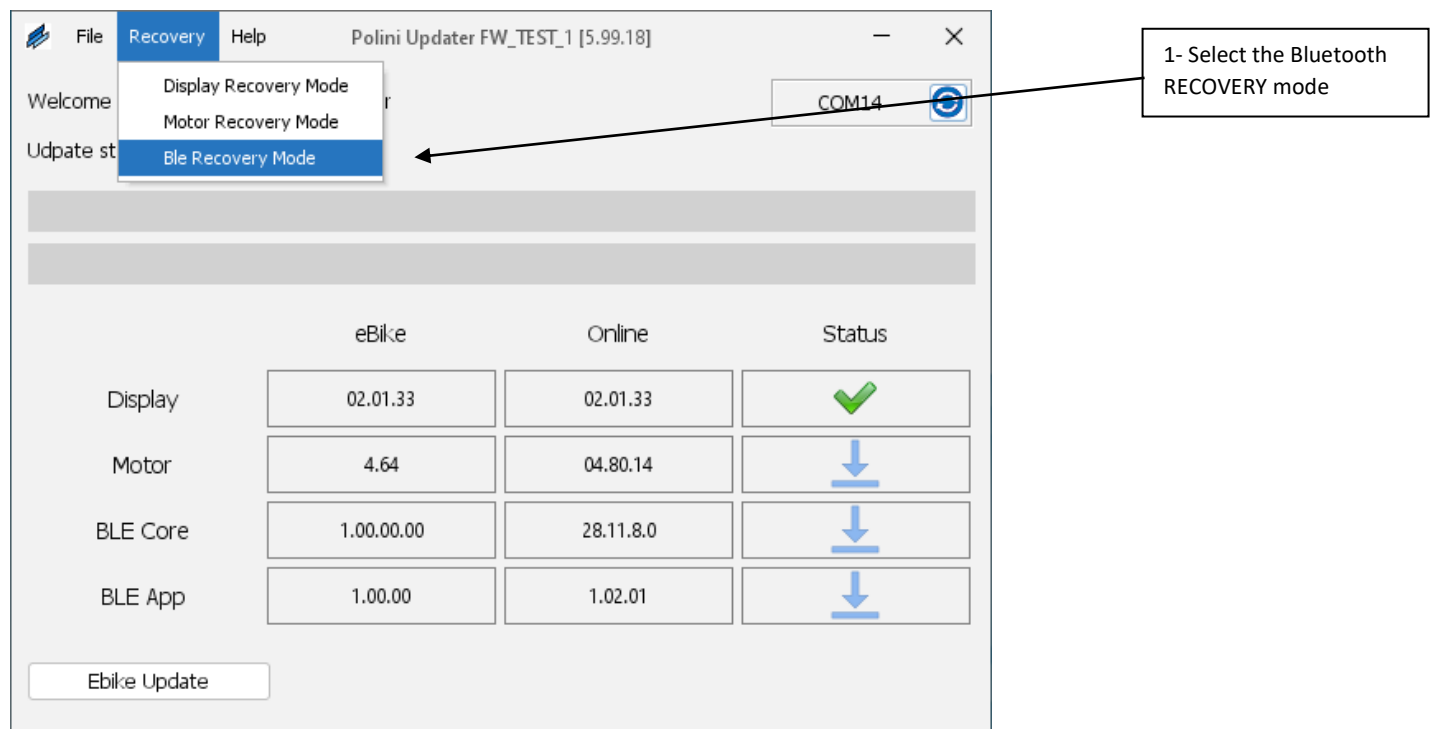
CAUTION: this procedure must be executed ONLY if the update of the firmware of the display has been interrupted before its conclusion and, consequently, the bluetooth does not switch on.

ATTENTION: the PC needs an *internet connection* to *update* your device.

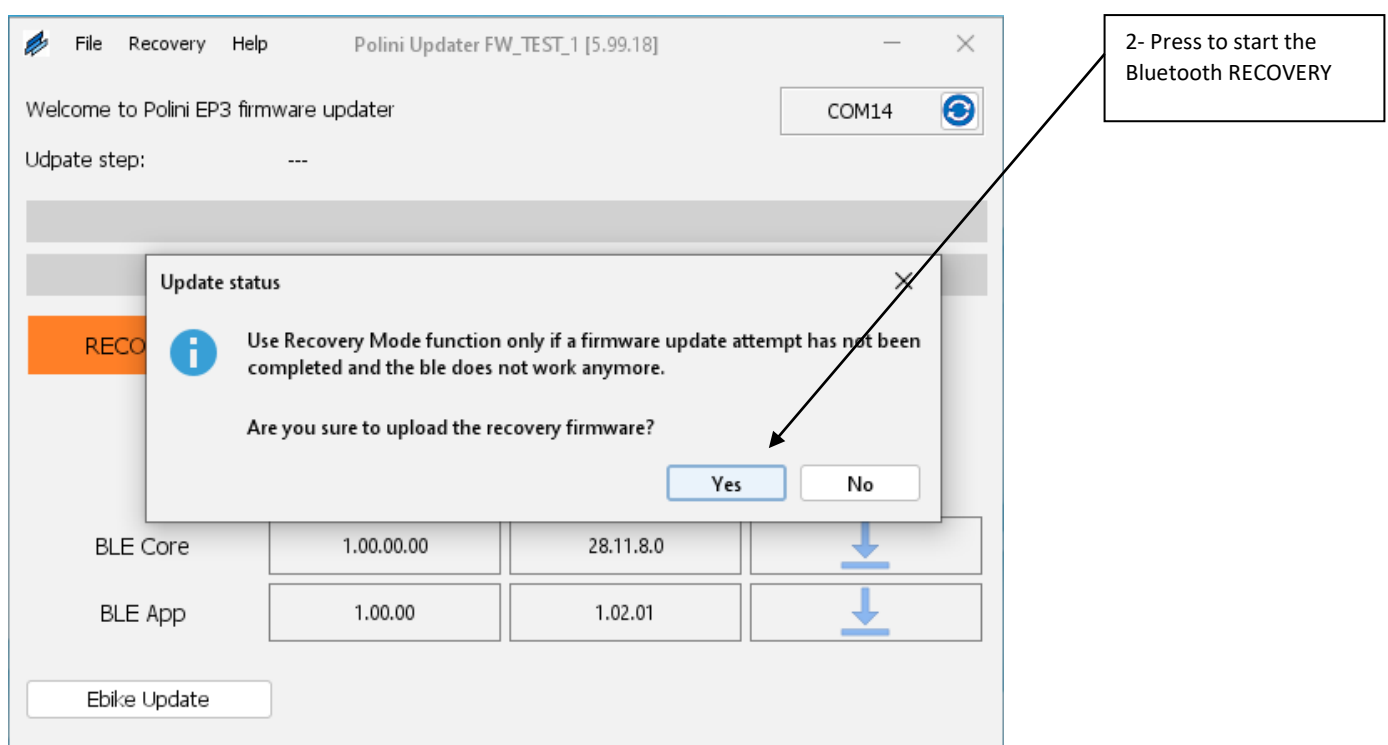
CAUTION: to avoid an unexpected switching off during the firmware update, check the battery charge status or connect the lap top to the charger.

CAUTION: do not disconnect the USB cable during the update.

- The recovery of the firmware of the display must be processed when the bike is ON
- Connect the USB cable to the motor and PC. Open the “Polini Updater” program



- On the top left of the “RECOVERY” menu select “BLUETOOTH RECOVERY” mode
- Confirm the recovery by pressing “YES” and wait till the procedure is over.



- When the procedure is over, disconnect the USB cable and switch the bike ON.
- If the motor/display does not start, contact the [Polini service](#) on the web site or at ebike@polini.com

6. REPLACE THE DISPLAY COMFORT E-P3 WITH A TFT EVO DISPLAY (COLOR)



Get the following parts:

- TFT EVO display item 955.830.053
- Display support:
 - ROAD: 955.830.017
 - MTB: 955.830.016 Ø31,8 – 955.830.027 Ø35
 - CENTRAL: 955.830.046 Ø31,8
- Control panel: ROAD: 955.830.037
- MTB: 955.830.036
- MTB 3 buttons: 955.830.056
- Motor display cables: item 955.830.023

TFT Display EVO



Cod. 955.830.053

Display support



ROAD Cod. 955.830.017



MTB Cod. 955.830.016 Ø31,8

OR



MTB Cod. 955.830.027 Ø35



CENTRAL Cod. 955.830.046

Control buttons



ROAD Cod. 955.830.037



MTB Cod. 955.830.036

OR



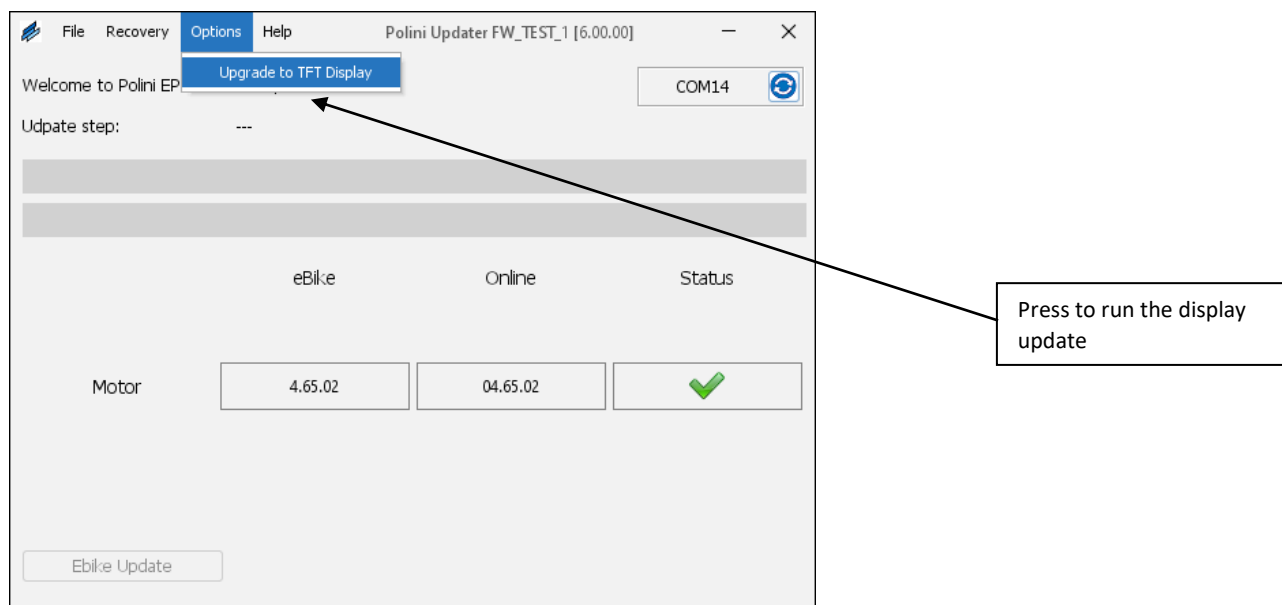
MTB 3 Pulsanti Cod. 955.830.056

Display connecting cable



Cod. 955.830.023

- Replace the motor connection cable with the new one (item 955.830.023), connecting it to the motor wiring
- Connect the new display (item 955.830.045) to the black cable (item 955.830.023) combining the arrows printed on them. Connect the switch controller cable (ROAD: 955.830.037 o MTB: 955.830.036 o MTB 4- button 955.830.021) to the display to the light blue socket combining the arrows printed on them.
- **ATTENTION:** the display firmware for this application is the FW 3.01.05 OR LETR. If the firmware is different from the one indicated the n. 33 alert sign will appear and the bike functions will be deactivated. In this case update the display firmware through the Polini updater program.
- Run the update of the motor firmware to a version equal or superior than fw 2.77 (or equal or superior than fw 4.66 depending on the version installed on the motor) as indicated in chapter 1. Once the update has been run, disconnect the USB cable, switch the e-bike OFF and then switch it ON
- Connect the motor to the PC through the USB cable, open the Polini updater and select from the menu “OPTIONS” the Item “UPGRADE THE TFT DISPLAY”



- To start the display update press “OK”
- When the process is over, disconnect the USB cable, switch the bike OFF, switch the bike ON and cancel the errors on the display.

7. HOW TO CHANGE THE 500WH E-P3 BATTERY WITH THE 500WH E-P3+EVO ONE

For assembly instructions, see the link:

<https://www.poliniebike.com/kit-batteria-500wh-evo2/>

